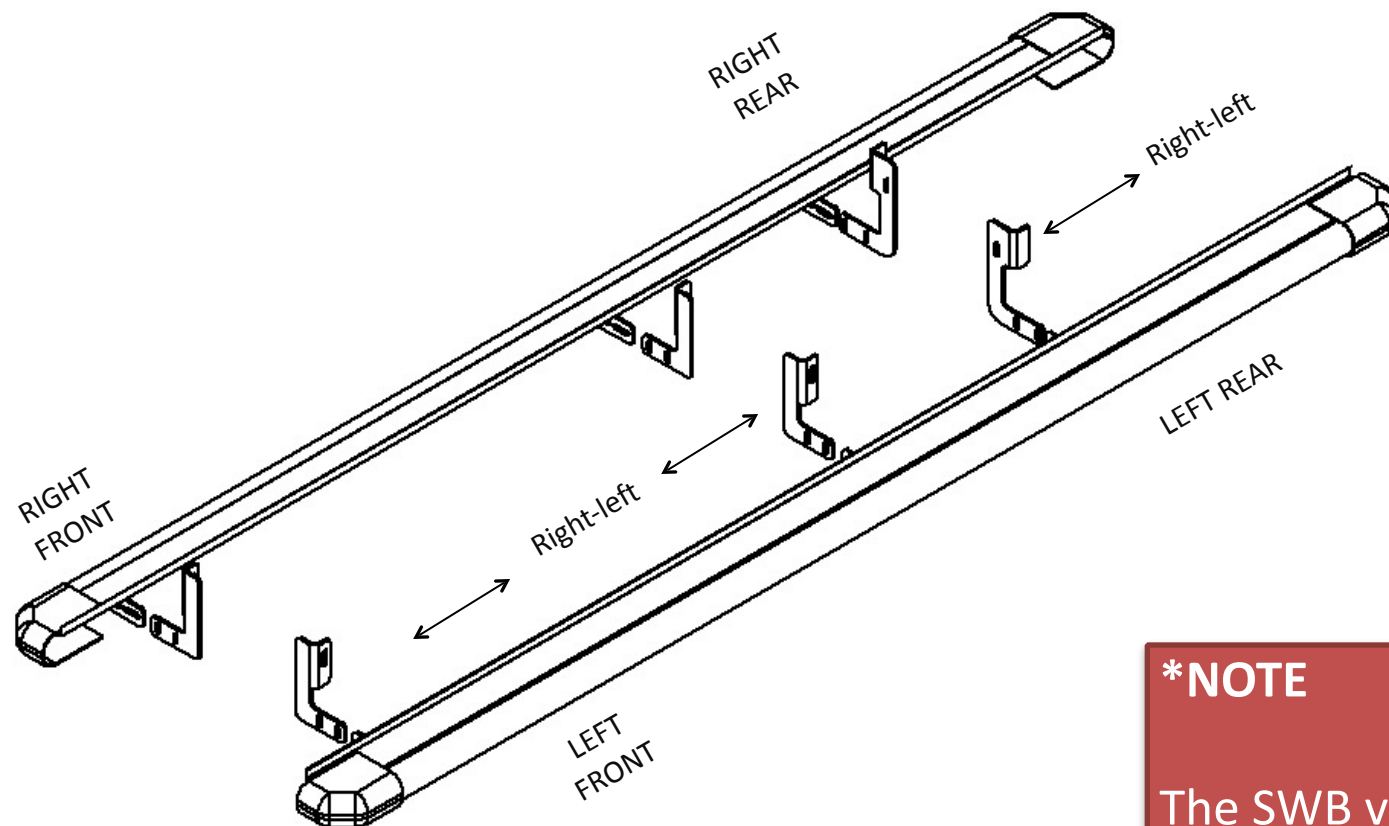
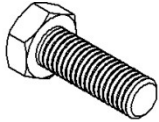
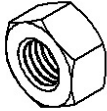
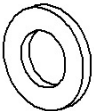
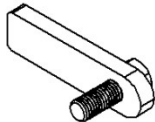


## TRAFIC/VIVARO/PRIMASTAR FOX RUNNING BOARDS SWB/LWB





	M10x30	14
	M10	18
	M10	32
	M10-P35	4

## \*NOTE

The SWB version and LWB version both have 3 pairs of brackets and 3 fixing points. See picture of brackets on next page of instructions.

LEFT/RIGHT  
FRONT  
BRACKETS

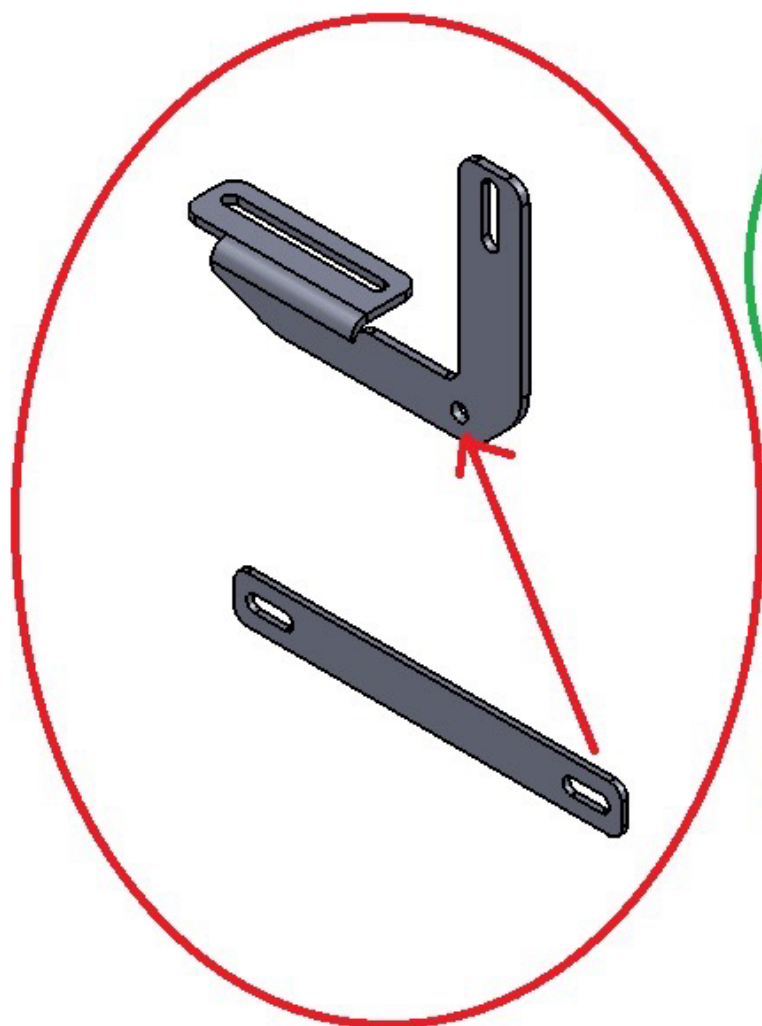
LEFT/RIGHT  
REAR  
SUPPORTS

LEFT/RIGHT  
REAR  
BRACKETS

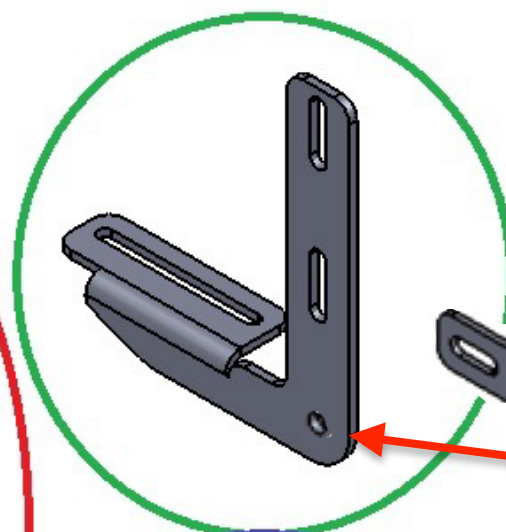
LEFT/RIGHT  
MIDDLE  
BRACKETS

LEFT/RIGHT  
MIDDLE  
SUPPORTS

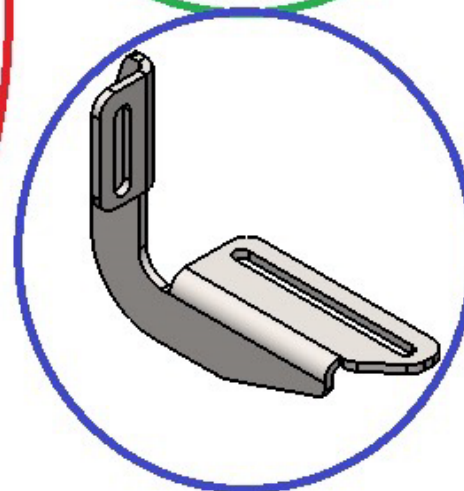




**RIGHT/LEFT REAR  
BRACKET**



**LEFT/RIGHT MEDIUMS**



**LEFT/RIGHT FRONT  
BRACKETS**



Fig:1 FRONT BRACKET

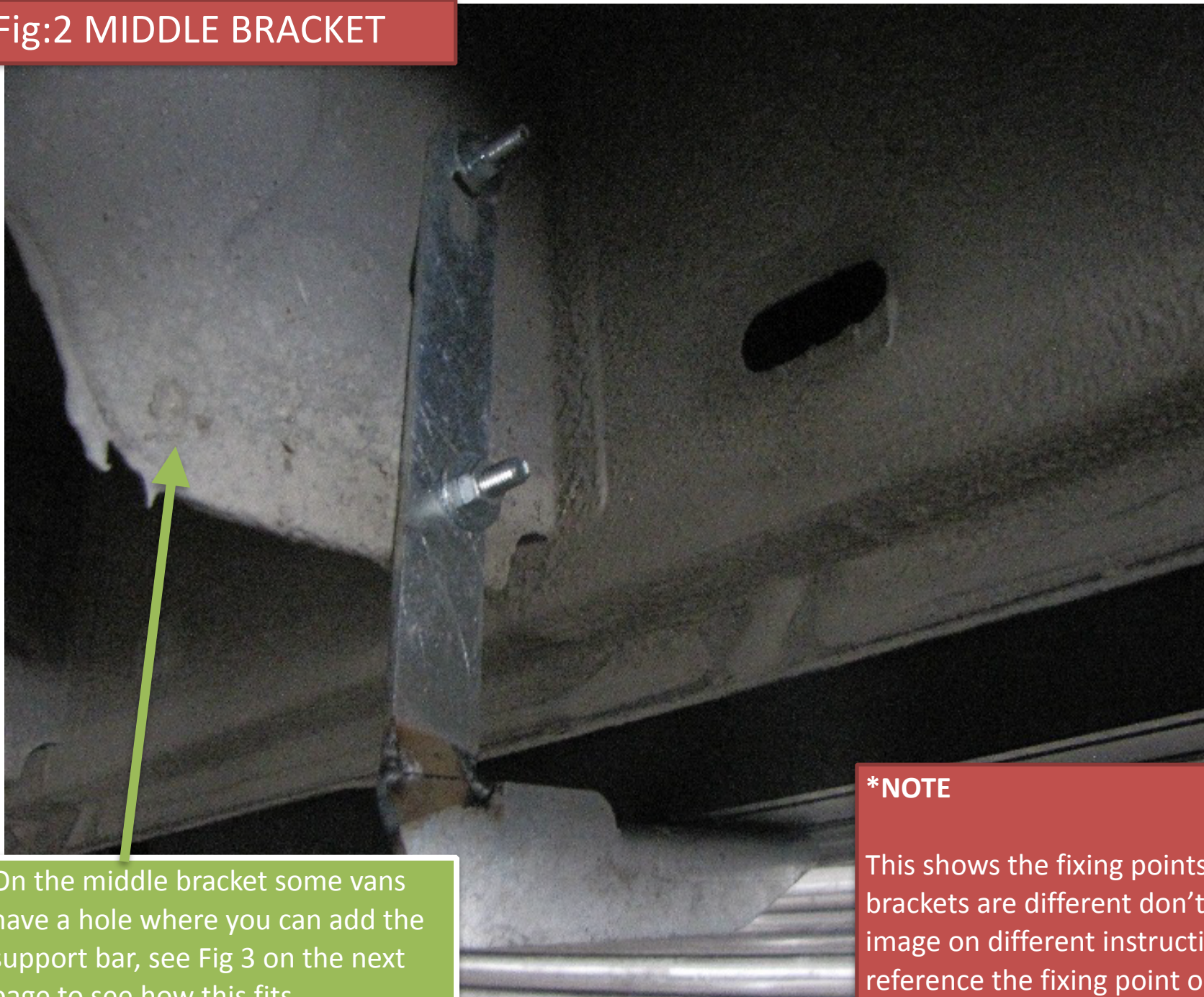


**\*NOTE**

This shows the fixing points on your van, if the brackets are different don't worry, we use this image on different instructions this is to reference the fixing point only.



Fig:2 MIDDLE BRACKET



On the middle bracket some vans have a hole where you can add the support bar, see Fig 3 on the next page to see how this fits.

**\*NOTE**

This shows the fixing points on your van, if the brackets are different don't worry, we use this image on different instructions this is to reference the fixing point only.



Fig:3 REAR BRACKET AND SUPPORT



**\*NOTE**

This shows the fixing points on your van, if the brackets are different don't worry, we use this image on different instructions this is to reference the fixing point only.